

The Inventive Factory

Friday 30th October – Saturday 31st October

CALL FOR PROPOSALS! The Novium museum is looking for artists, performers and musicians to participate in a unique 24 hour creative event. Be part of the national Museums at Night festival where creativity and culture combine in a spectacular participatory event.

Proposals will be selected by Yinka Shonibare MBE who will also be participating in the event.



Photograph courtesy of James Mollison, 2014

INSPIRED BY GUEST PROJECTS AT YINKA SHONIBARE MBE STUDIO.

An open call for submissions of proposals to participate in the Inventive Factory is inspired from the model used to select the residency programme at Guest Projects. Guest Projects is Shonibare Studio's experimental space, which offers the opportunity for artistic practitioners, of any artistic discipline, to have access to a free project space for 1 month. Based in London's creative hub of Hackney,

it provides an alternative universe and playground for artists. It is a laboratory of ideas; a testing ground for new thoughts and actions.

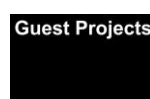
In the spirit of the Guest Projects ethos- an experimental space that is open to all- we welcome proposals from any artistic discipline, which is based on or inspired by the works in The Novium museum's collection. This can be done in a number of ways such as film, performance, music, dance, photography, experimental art, fashion.



THE NOVIUM MUSEUM

The “Inventive Factory” takes its name from a quirky local inventor called Colin Pullinger, who created the first humane mousetrap which is on display in the museum today. The Novium museum is a colourful smorgasbord of local history highlighting creative and often eccentric individuals from the past. We trace footsteps through history exploring themes of Bravery, Joy, Sorrow and Creativity within the exhibitions. The change and continuity of objects over time is of particular interest and in the displays we deliberately juxtapose objects such as a fragment of Roman window glass beside a Victorian glass wasp catcher to highlight this concept.

Areas of the museum will become Inventive Factories with a different creative focus and activity at each area. This will create a mini festival event involving



music, performance and art. Participants and visitors to the event will be encouraged to create artwork in response to the museum's collection as well as stories of local individuals. The objects and artwork that are produced at the event will then be retained as an Alternative Museum collection to be exhibited at the museum for a short period afterwards. The artwork must then be collected by the artists by the 8 November (unless any pre agreed exceptions are made with the museums staff). Any unclaimed work will be disposed of.



PROPOSAL PROCESS

This is an open submission for groups and individuals.

There is no funding available for individual Inventive Factory ideas. However there are some resources available from the museum, see the list on page 5.

If you have any queries about the event or would like to discuss your proposal idea please contact ccoleman@chichester.gov.uk. We encourage you to visit the free entry museum before submitting your proposal.

Please submit your proposal via the online form found on <https://inventivefactory.wufoo.com/forms/z1s38xly0xkbr60/> or on the museum website www.thenovium.org.uk

Deadline for final proposals – **5pm Thursday 24th September.**

Proposals will be shortlisted by The Novium museum and by Yinka Shonibare MBE. Successful applicants will be contacted by the **2nd October.**

Successful applicants will then be given a shift and timetabled into the 24hr Inventive Factory. They will be invited to attend a meeting on **6pm Thursday 8th October** to see the space they'll be using, hear more about the event line up, meet other Inventive Factory artists, and to ask any questions about the event.

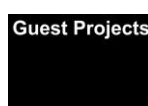
If your proposal is successful, it will then be up to you to source and prepare everything you need to run your factory in the time slot allotted to you on the **30th or 31st October**

Objects, work, images that are a product of the Inventive Factory will remain on display for the rest of the weekend.



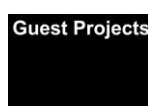
THE MUSEUM CONSTRAINTS

- Must not use wet materials anything which can spill and/or stain the floors, walls and objects on display (for example- glue, paint, water, food stuffs, drinks) in anywhere but the Woolstaplers Room area
- Must not use natural materials which might have bugs and be a food source for pests in the museum (e.g. flowers, leaves, untreated wood, animals, seaweed, food)
- Must not move the exhibitions or use the objects on open display for example placing things on them/siting on the mobile stocks etc.
- Must not make structural and topical alterations to the walls/floor/ceiling. Unable to put anything on the walls, for example - mounts, nails, Velcro, double sided tape, bluetac.
- Must not go down into the Roman bath house remains.
- Must not use any dangerous objects e.g. Open flames, weapons
- Must not use additional heaters
- Must not use dry ice
- Must have Family Friendly content – for proposals taking place on Friday 4pm – 8pm and Saturday 6am – 4pm
- Option to have content suitable for over 18 year olds between 8pm – 6am.
- Option to have additional lights – small lamps, fairy lights, battery operated candles are allowed as long as they are not shining on objects as this causes damage to them.
- Noise must be limited. Music and/ or sound will be allowed but the volume levels will be at the museums staffs discretion. This is partly due to being in a residential area and also due to minimising vibrations and therefore damage to the museum objects.



WHAT THE MUSEUM HAS AVAILABLE THAT YOU COULD USE

- You can have access to power sockets - in specific areas to minimise trailing extension cords.
- There is open Wifi access – but this can be limited particularly if many people are using it at the same time.
- The museum will have a microphone and speaker system already set up in ground floor area.
- Tables 2metres by 1m are available to use – please state the number you would like to use in your proposal.
- Folding Chairs are available to use
- The museum will provide basic art equipment - assorted paper, pencils, crayons, chalk, pritt stick, rulers, scissors, masking tape, paper plates, plastic cups,
- Objects from the handling collection – which can be looked at, touched, but not changed or damaged. Replica historical helmets, 2 sets of Roman Lorica armour, access to handling objects around the themes of Roman, Saxon, Tudor, Victorian, WW1 and WW2. See loans box contents lists for further details.
- Parking is limited near the museum – on street parking is free after 6pm. There is a loading bay area which is accessed at the back of the museum. Cars cannot park here only drop and collect things.

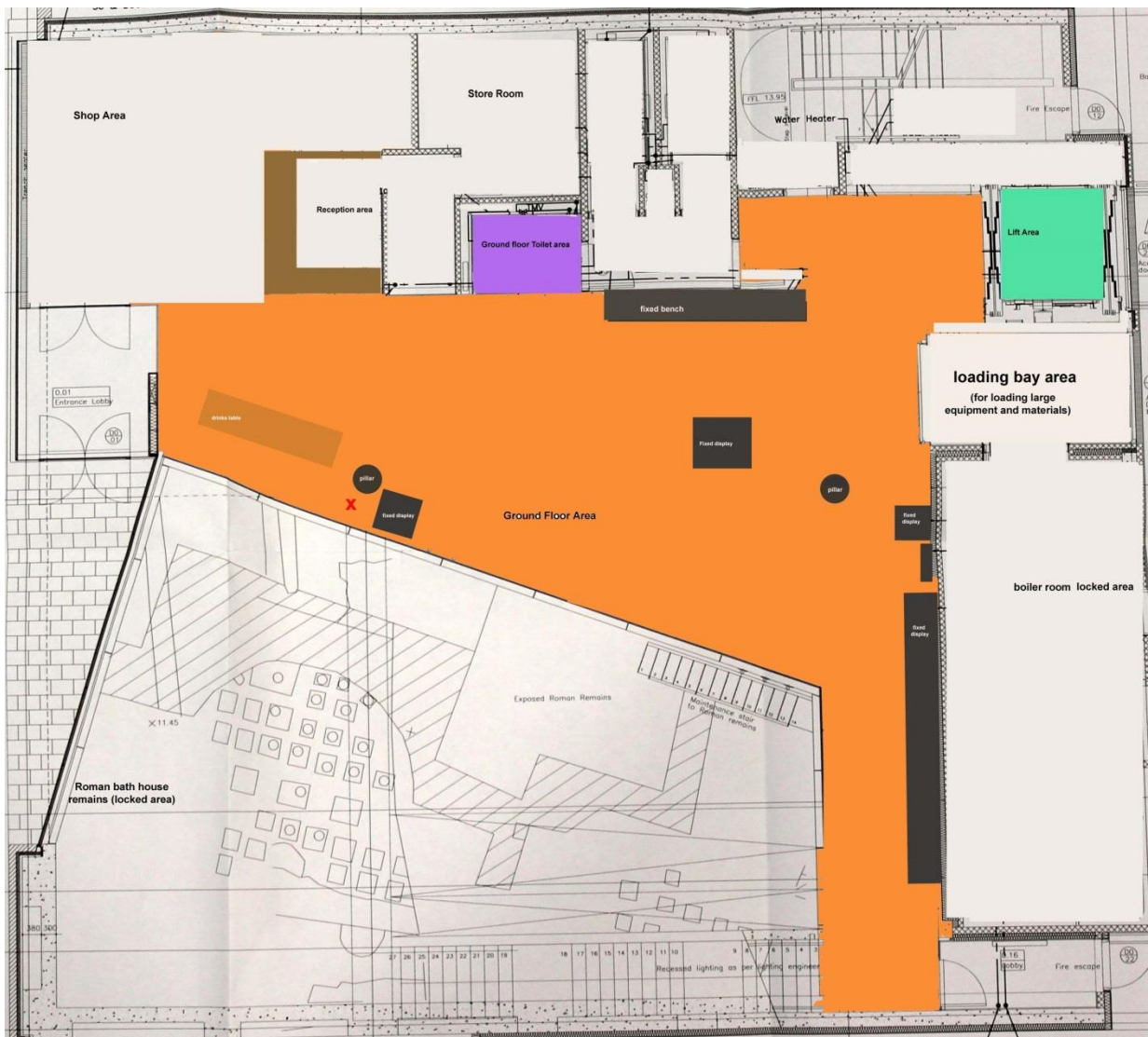


OPTIONS OF SPACES TO USE

GROUND FLOOR

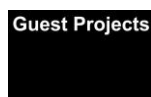
Floor Plan of Ground Floor of The Novium museum – colourful areas are art and performance spaces

Red cross marks power sockets



Ground floor Roman Hall – best location for groups performance, music.
 Displays are themed Roman Chichester and temporary Curious Case of Collecting: World Objects in Chichester. Open floor space beside open archaeological display of Roman Bath house.





Lift – large lift space which can hold a maximum of 38 people. Able to use masking tape to stick things to the walls of the lift. Must still be accessible and able to be used as a lift for people using wheelchairs, pushchairs etc.



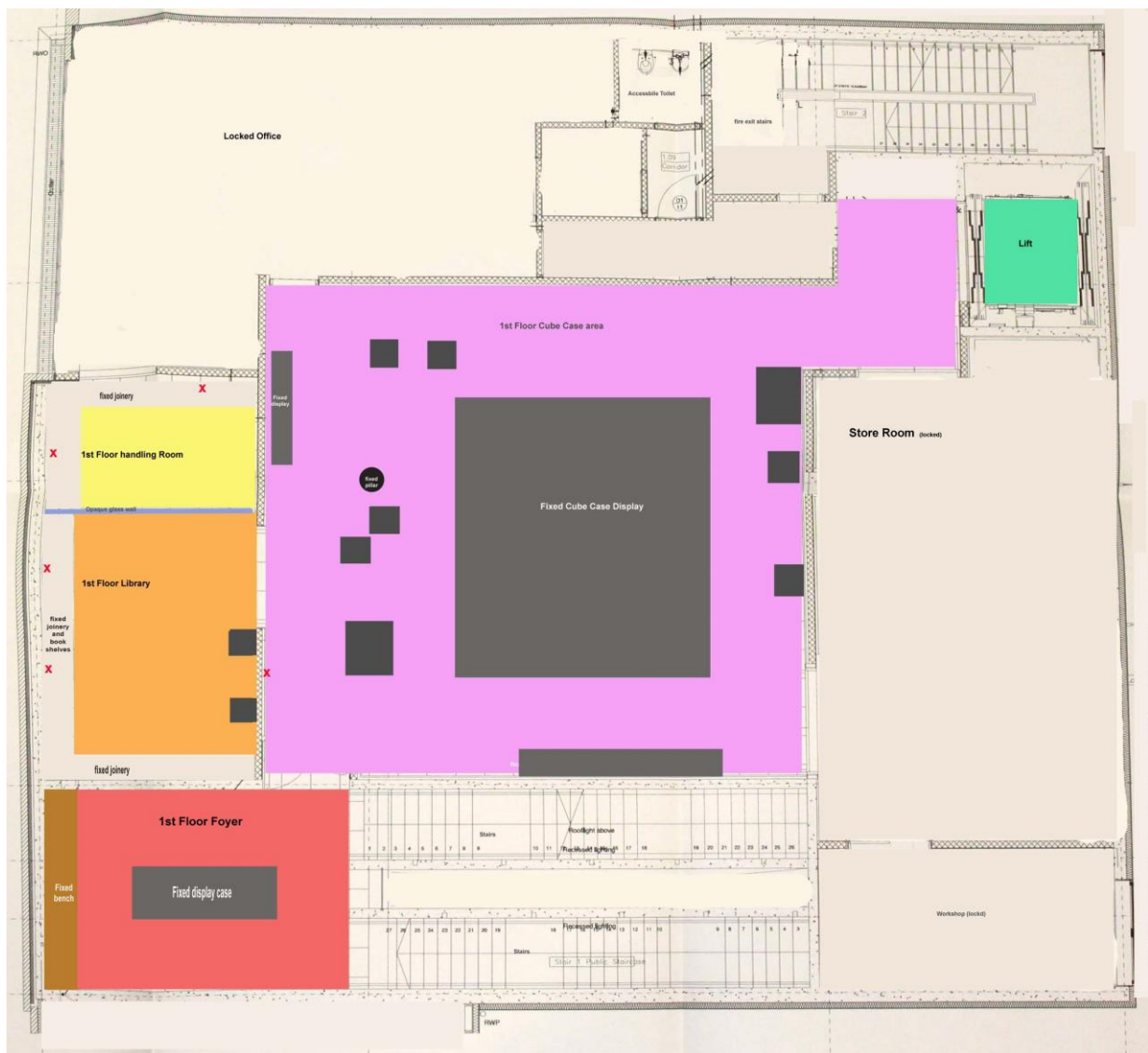
Ground Floor disabled access toilet – This toilet will be an art space for the event and not in use!.



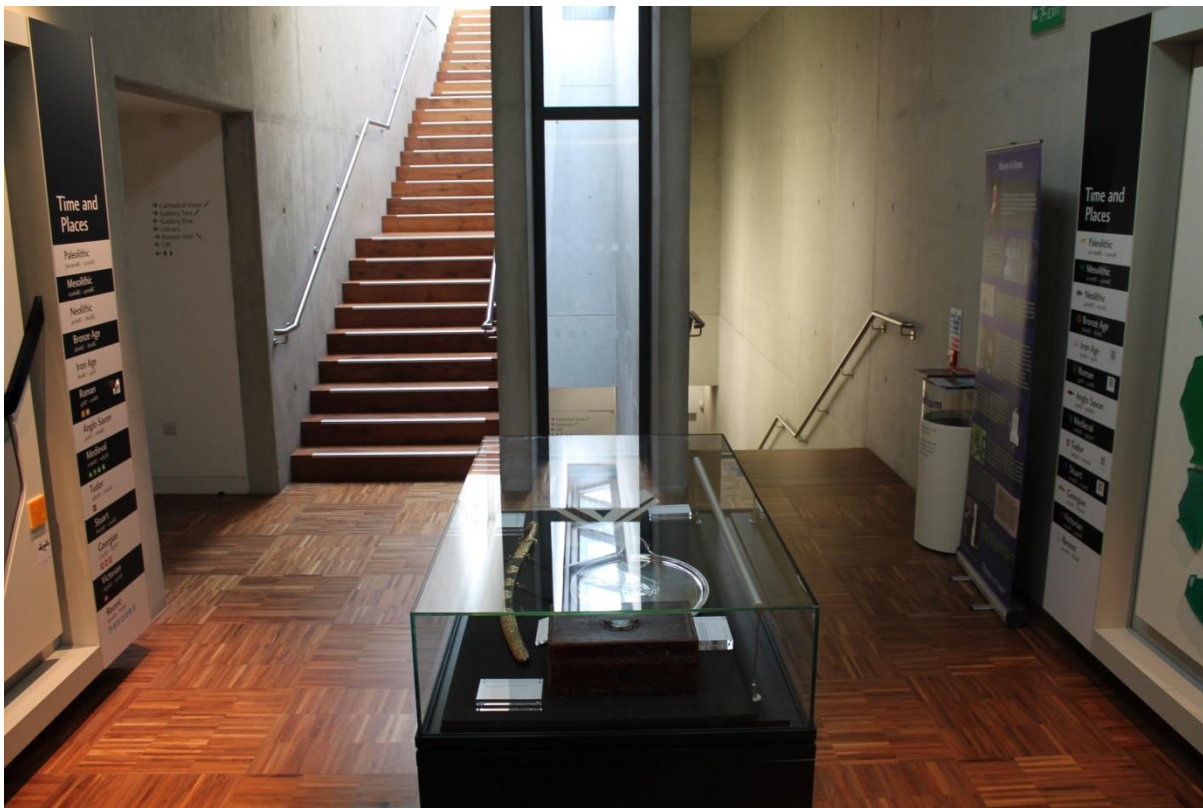
1st FLOOR

Floor Plan of 1st Floor of The Novium museum – colourful areas are art and performance spaces as well as the area around the central cube case.

Red crosses mark power sockets



1st Floor Foyer - Admiral George Murray exhibition, 2 large maps of Chichester and the district on display in this area.



1st Floor Library – books must remain on shelves. Has a plasma TV screen with DVD drive – this can be used with a DVD.



1st Floor Handling Room – a small space able to have a glass wall and door closed. Books must remain in cupboards and current areas



1st Floor Cube Case Gallery – Large cube case with a display of the chronological development of Chichester. Small plinth cubes are also displayed on this floor containing mysterious objects from the collection. There is a large timeline on one wall of the gallery.



2nd FLOOR

Floor Plan of 2nd Floor of The Novium museum – colourful areas are art and performance spaces

Red crosses mark power sockets



2nd Floor Cathedral View – Large window overlooking Chichester Cathedral



2nd Floor Themed Gallery –Exhibitions on display are thematic WW1, Bravery, Joy, Sorrow and Creativity. Option of using the touchscreen computer monitor on the interactive table which can be used to show film, images, access Microsoft applications. Has sound, speakers as part of monitor but has no internet access.



2nd Floor Woolstaplers Room – A plain room with no exhibition space. Has a large window overlooking the cathedral and rooftops. Participants are able to use wet materials here and will share the space with eating and drinking area.



Contact Information

Please complete the proposal form at

<https://inventivefactory.wufoo.com/forms/z1s38xly0xkbr60/>

also find this link from The Novium museum website and facebook page.

The Novium museum website - www.thenovium.org

The Novium museum facebook - <https://www.facebook.com/TheNovium>

Phone - 01243 775 888

Email Catherine Coleman ccoleman@chichester.gov.uk to discuss any queries

For more information about Shonibare studio's Guest Projects please visit the website www.guestprojects.com

For more information about national Museums at Night festival
<http://museumsatnight.org.uk>

